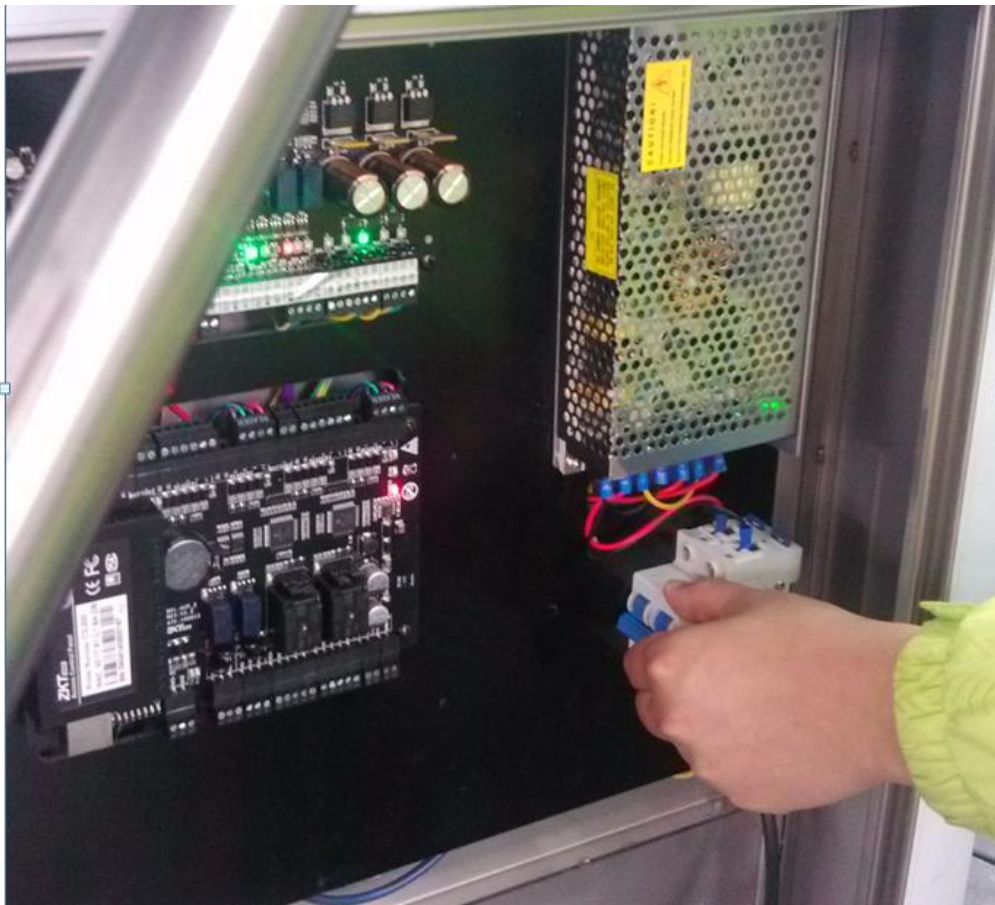


1. Please disconnect the power supply.



2. Open the top cap of the turnstile.



3. Unscrew the two screws of the mask.

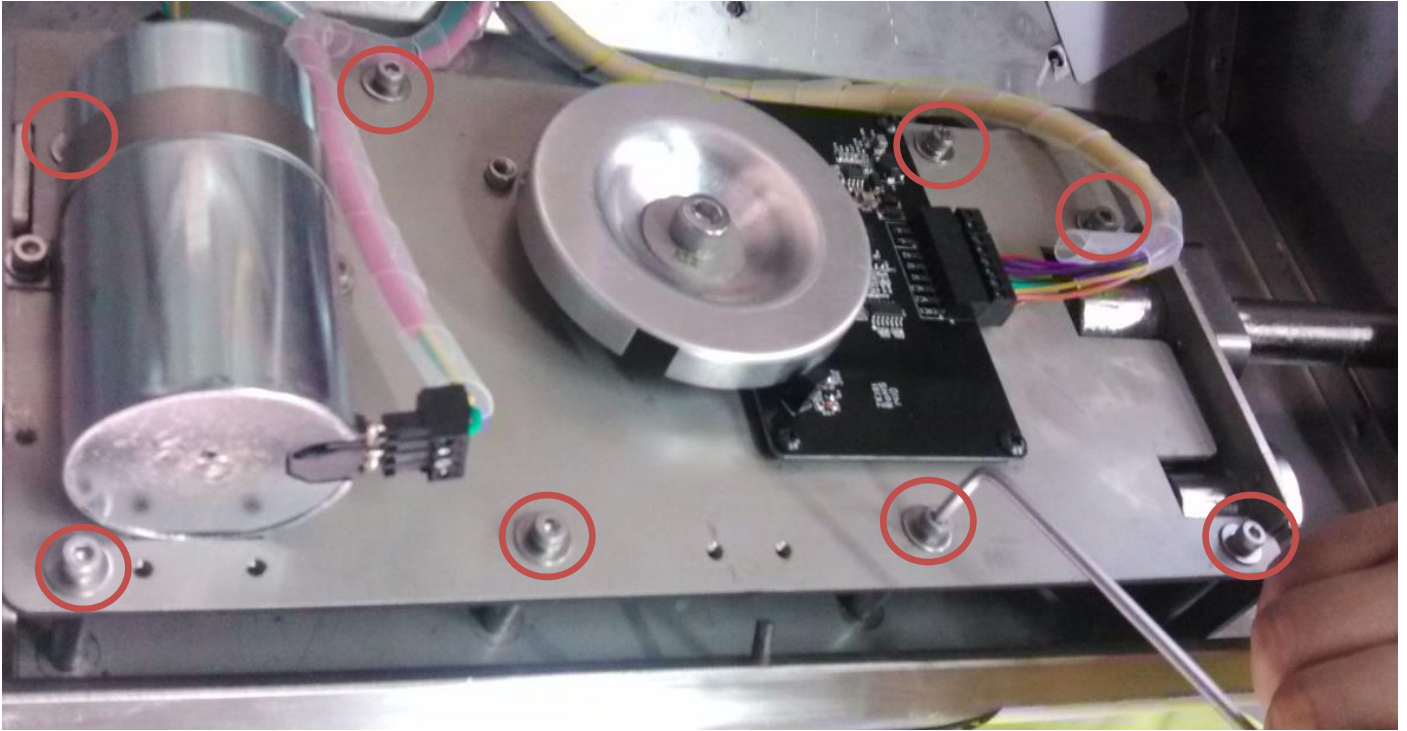


4. Remove the mask.

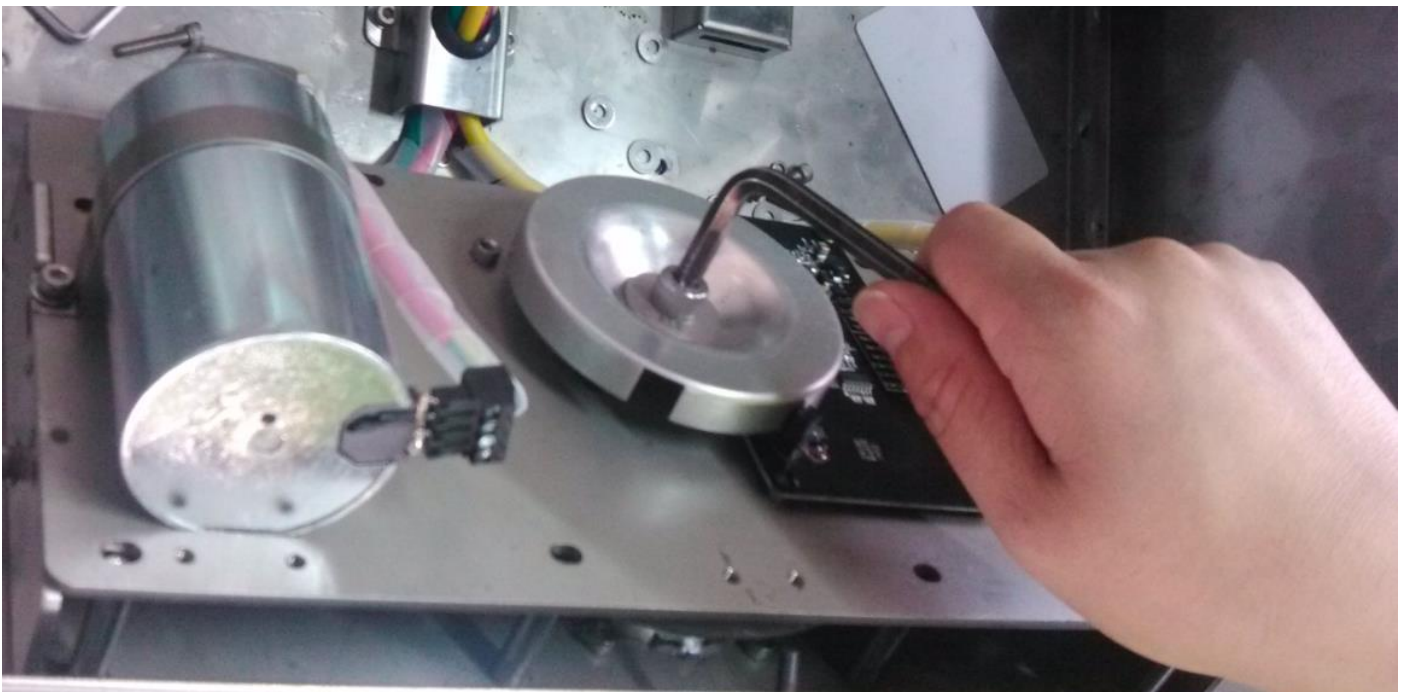




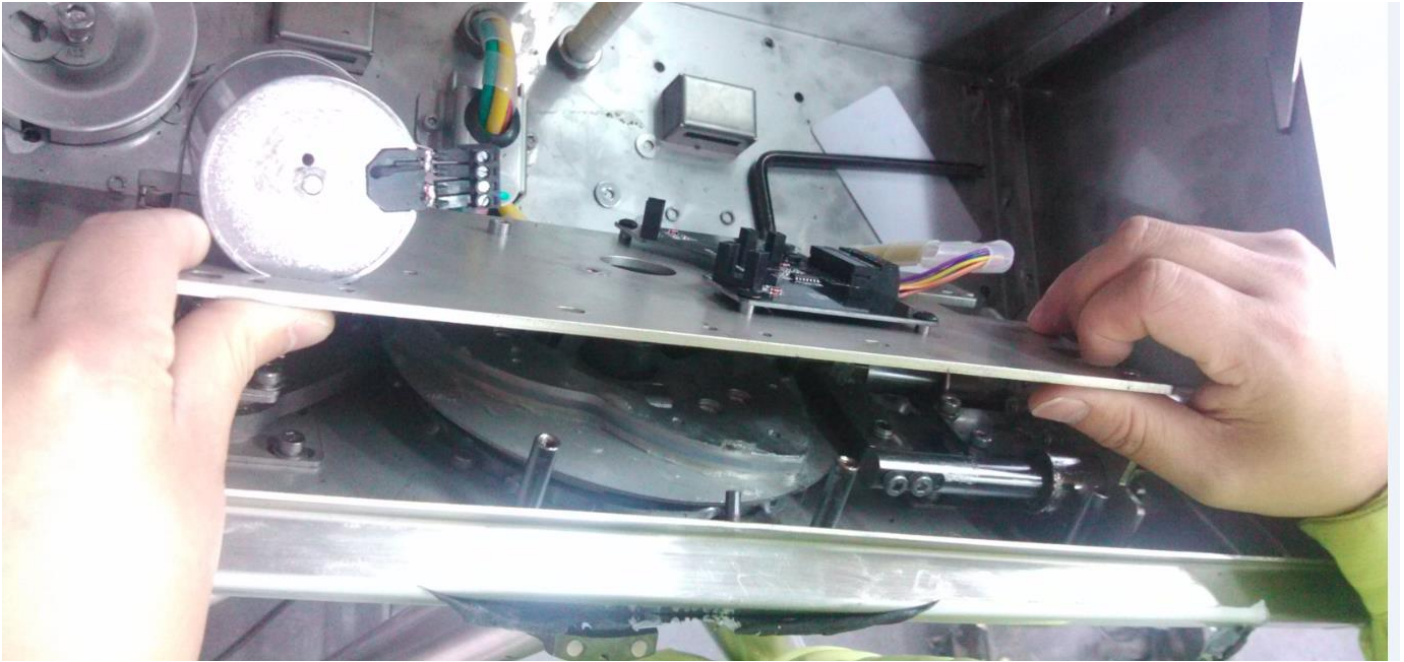
5. Unscrew the screws around the mask.



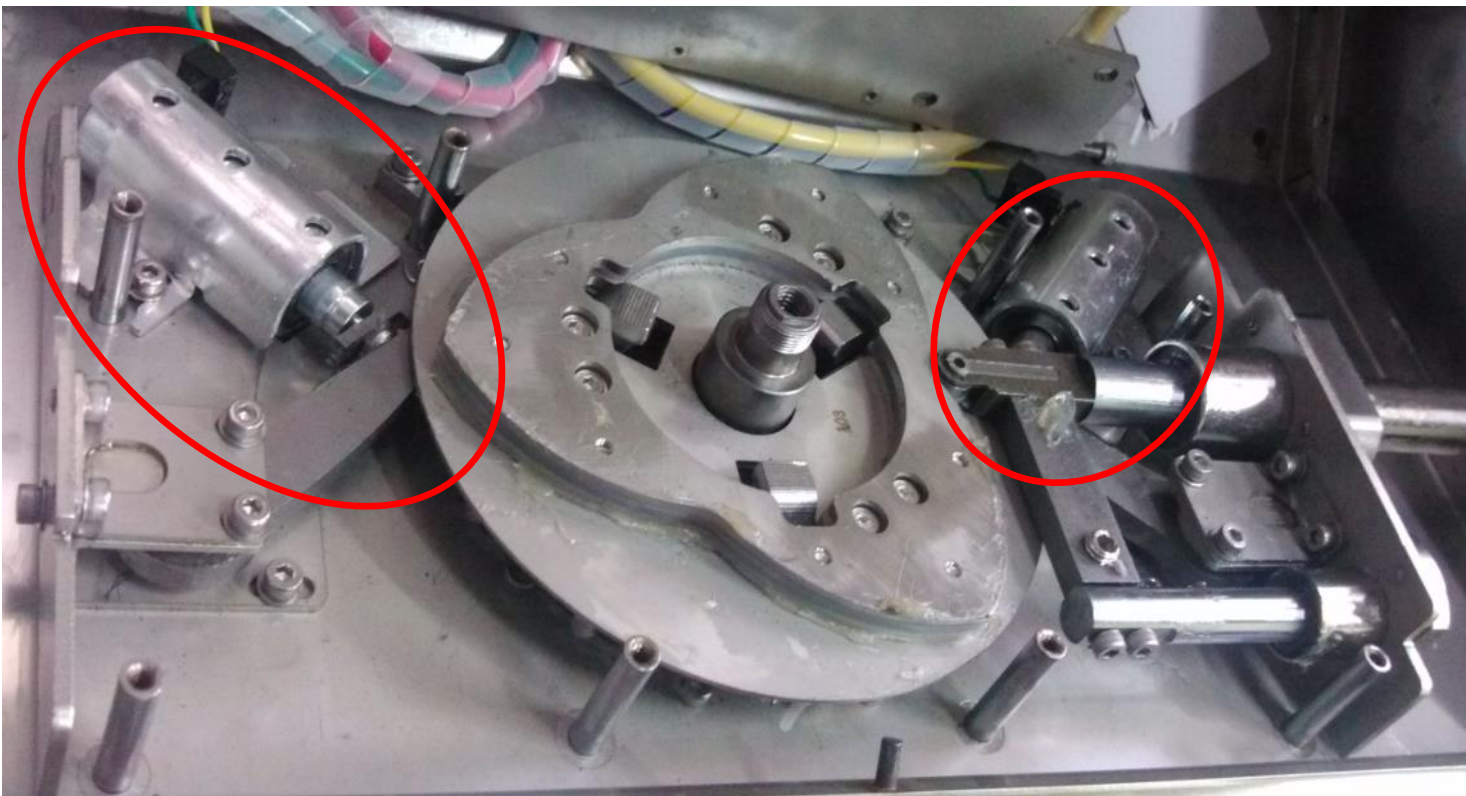
6. Unscrew the screws of the shaft.



7. Open the mask.



8. There are two electromagnets on the two side of the shaft, please you can select one to hobble it by using the ribbon (according to your requirement, for example if you want the Left-Normal Open, please hobble the electromagnet on the left ).

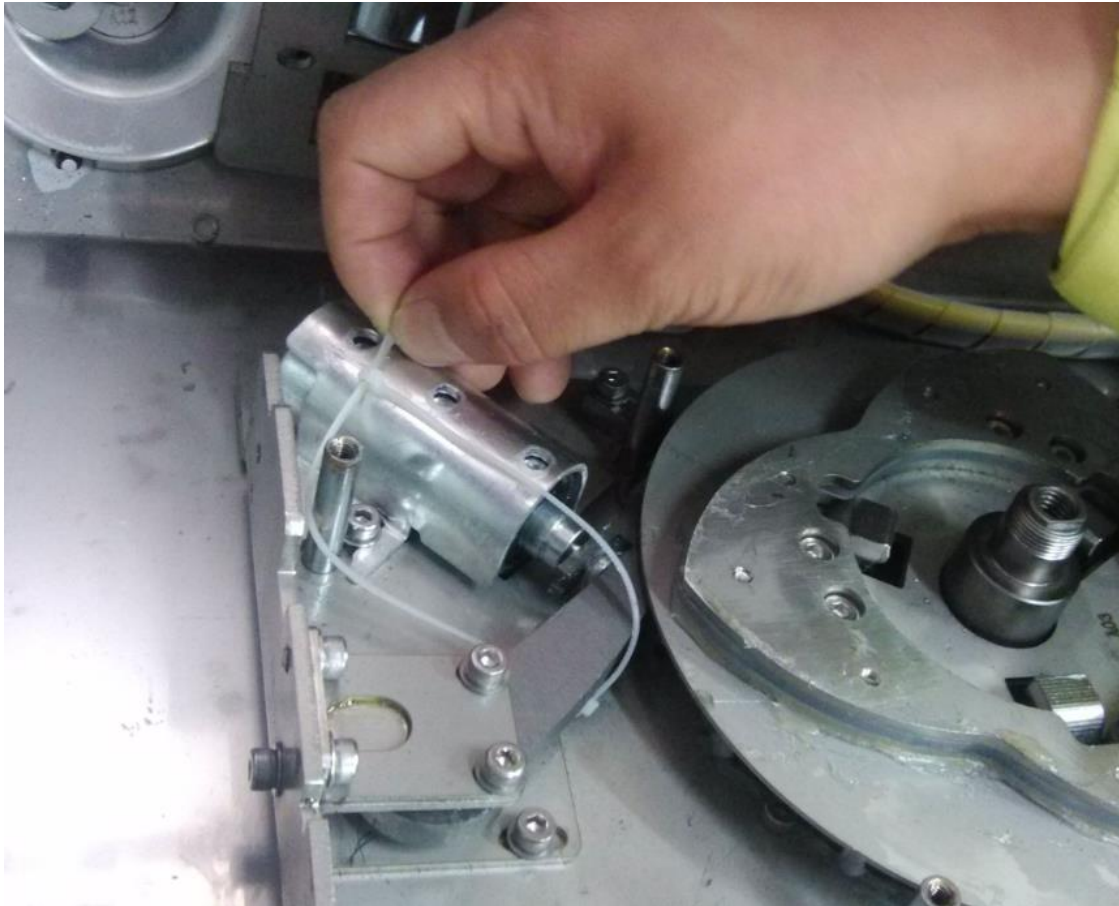


Left

Right



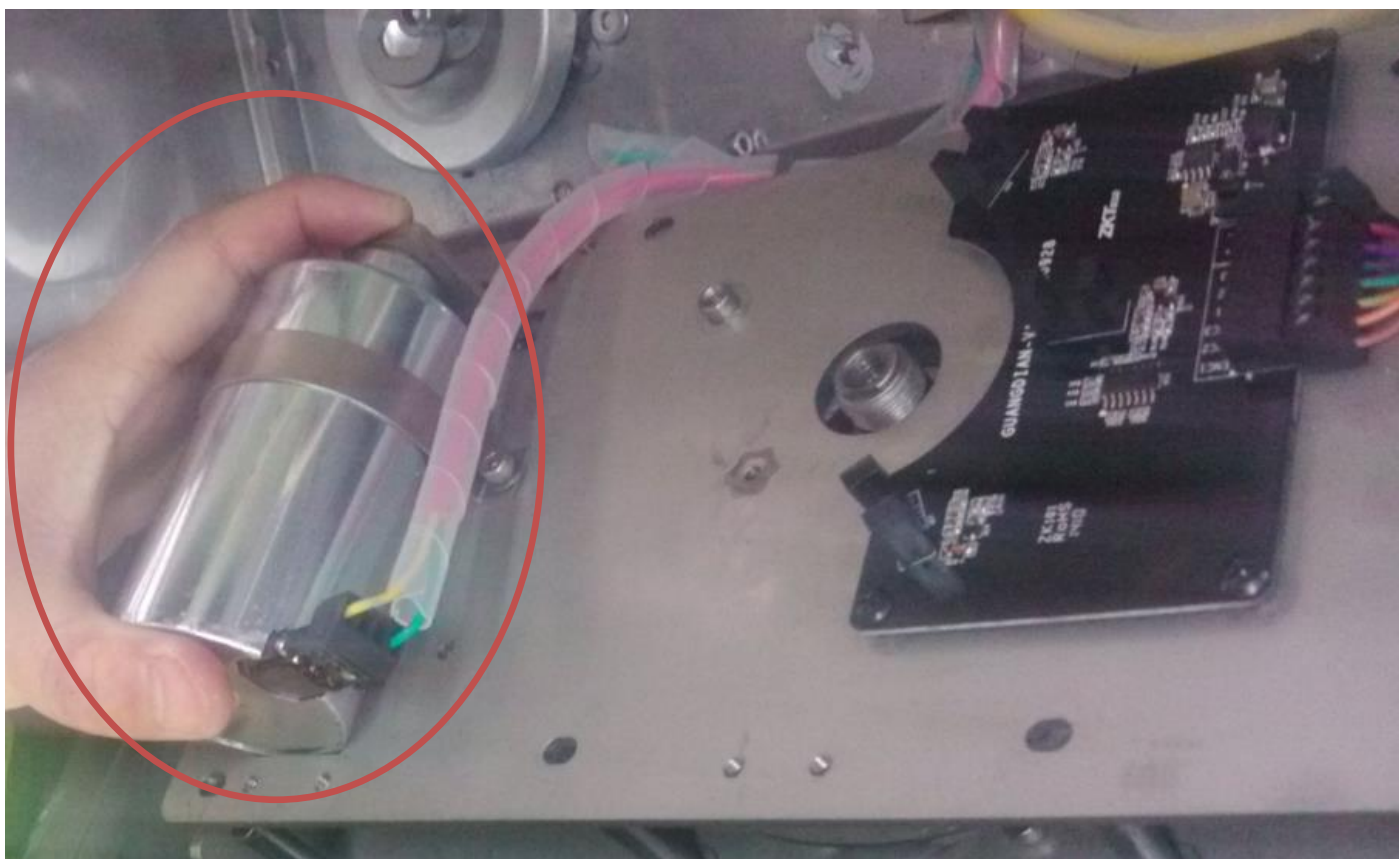
9. Hobble the driving lever of the left electromagnet with ribbon.



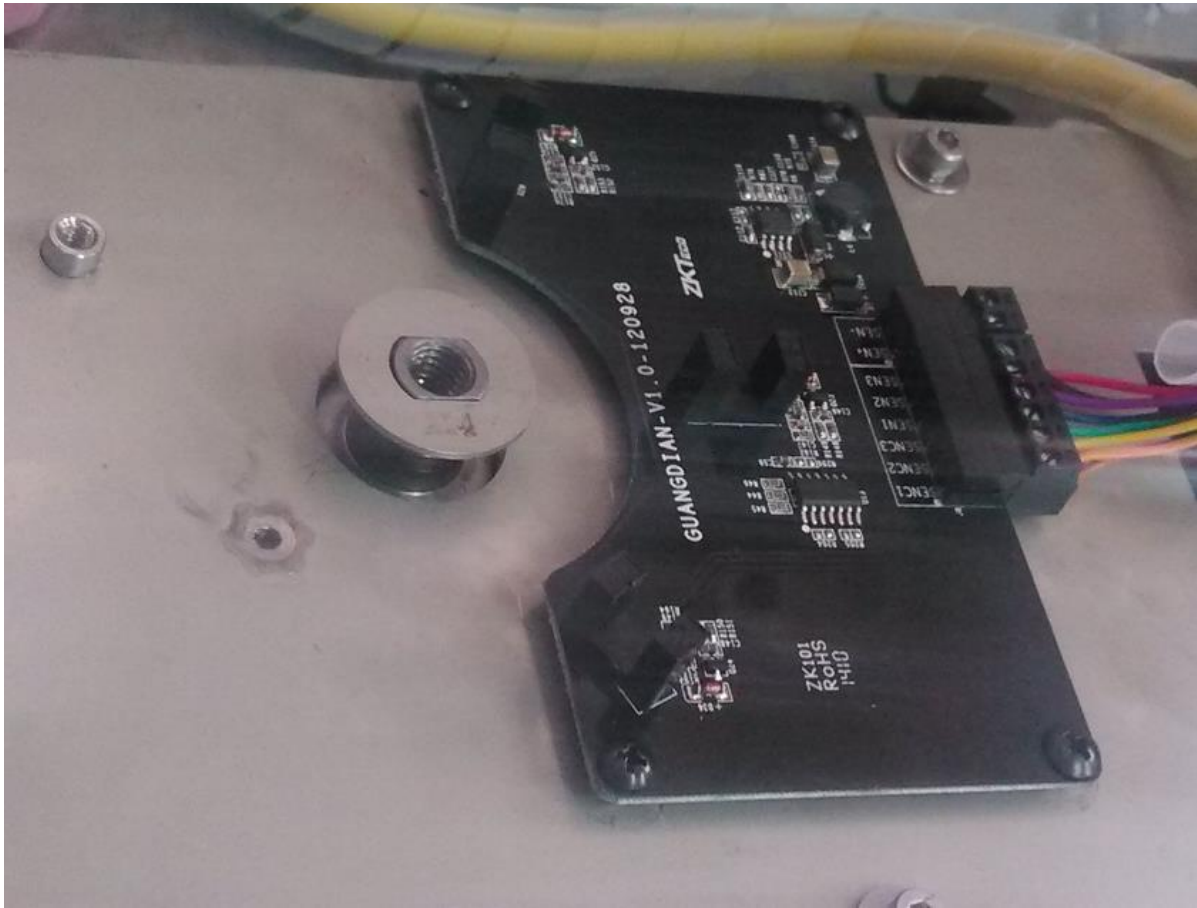
10 Disconnect the power supply of the electromagnet.



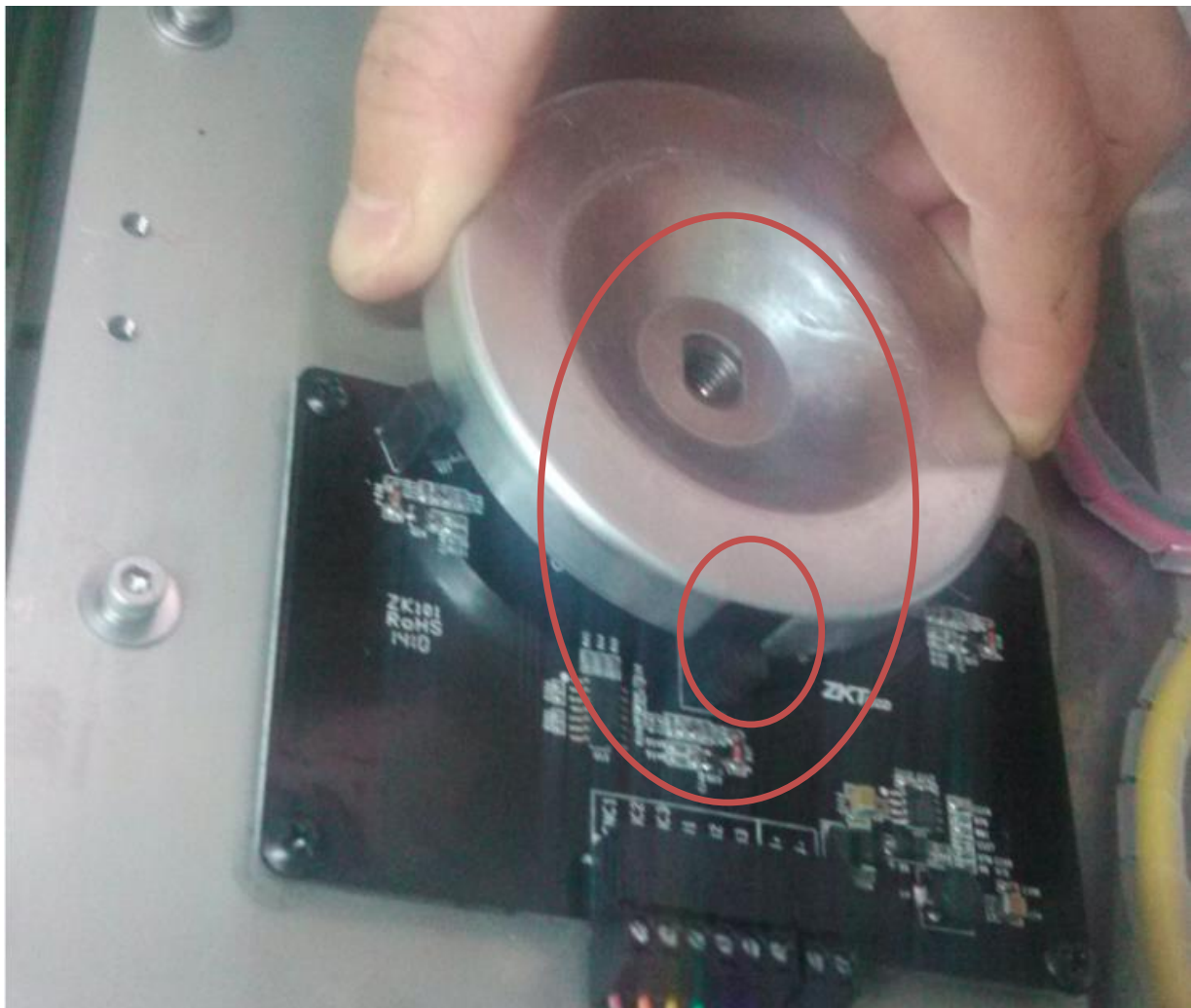
11. Install the mask, please make sure to hold the big electromagnet at the same time, then screw up all the screws around the mask.



12. Put the pad to the shaft.



13. Screw up the screw at the gap of the roundel (as the below image shows).





14. Install the mask.

